

User Manual V3.0

AS4 Plus Portable GPS Tracker

(For Vehicle/Container/Boat/ Personal)



1. Product Overview

GPS TRACKER AS4 plus is the combination of GSM and GPS technology, it uses industrial-grade fireproof material, 6 18MM × 3MM strong magnets , IPX-5 waterproof level, built-in 8000MAH high-capacity battery, long standby 100 days, Magnetic free installation design, easy to use.

Application:

- car rental / small fleet management
- Outdoor Activities
- Child / Elderly / Disabled / valuables custody
- Personal Safety
- Personnel Management
- tracking
- Animal Protection and grazing

For your safety:

In order to realize the full functions of this product, please read this manual carefully before starting to use the product.

1.	This product can only be maintained and repaired by qualified professional service personnel. If you detach this product for maintenance or repair, your warranty will be invalidated.
2.	When connecting the other devices, read carefully their instruction manuals, so as to carry out correct installation; do not connect incompatible device.
3.	Please use genuine original parts and qualified batteries and peripheral equipments, so as to avoid damage to this product.
4.	As this product is a high-tech product, please read carefully this manual before starting to use the product, so as to avoid inappropriate operation.
5.	Drivers should not operate this product while driving a vehicle, thereby, affecting safe driving.
6.	This product can work properly only when GSM communication is in good condition.
7.	Please reduce electromagnetic wave interference to the product; and use it properly.
8.	GPS communication is liable to be affected by environmental shielding; may fail to carry out positioning during certain circumstances. It will resume the positioning function as soon as it leaves the shielding environment. This is normal. Please do not worry

	when encountering such problem.
9.	Each signal sent out from the system will be confirmed for successful transmission in the base station of the mobile operator. However, if system stoppage occurs or if the mobile telephone is preset to a switch off state by the customer, it cannot ensure successful transmission.
10.	For safety reason, do not tell the other people your GTLT3 mobile number, without taking precautions. Otherwise, your privacy may be compromised along with other safety problem.

2. Specification

Item	Details
Charging Voltage	DC 5V/1000mA (MICRO USB)
Built in battery	10000 mAh (3.7V)
Size	131 mm × 72 mm × 20mm
Weight	300g (including battery)
Operating temperature	-20° to 55° C
Operating Humidity	5% to 95% Non-condensing
GSM Chip	Quad Band GSM 850/900/1800/1900Mhz
GPS Chip	UBLOX7020
GPS sensitivity	--162Db
GPS frequency	L1, 1575.42 MHz
C / A code	1.023 MHz chip rate
Channel	56 channel all-in-view tracking
Location Accuracy	10 meters, 2D RMS
Speed Accuracy	0.1 m/s
Time Accuracy	1 microsecond time synchronization of satellite time
Default Data	WGS-84
Updated Time	average 0.1 sec
Hot Start	Average 1 sec.

Warm Start	average30 sec.
Cold Start	Average 32 sec.
Maximum Height	18,000 meters (60,000 feet) max.
Maximum Speed	515 meters/second (1000 knots) max.
Maximum Acceleration	Less than 4g
Instantaneous displacement	20 m/sec
Stand by time	100 days
LED	3 LED lights display the charge, GPS, GSM status
Bottom	SOS emergency button

3. Installation:

3.1 Product part list

- 5V 1000MA charger
- Charging Cable
- User guide and warranty card
- GPS tracker AS4 plus main unit

3.2 Charging

First charge, please charge more than 12 hours, please use the original charger and battery.

Note:

(1) This product contains a chemical composition batteries, please do not bump, stab it into the fire.

(2) Please charge to ensure that equipment is working properly.

3.3 Precaution before Installation

1	Check if all the parts are included.
2	Prepare a SIM card for GSM communication. Use some other mobile phone to confirm that the PIN code has not been set and that it can dial out and receive telephone calls and SMS without problem.
3	Before install the SIM card; make sure to cut off power from the GPS Tracker unit. The correct installation method is to push the tray completely into the GPS Tracker unit, until you feel it is hooked

	by something.
4	<p>Find a suitable place inside the car for installing the unit. Concealed installation for avoid the thieves damage Avoid install together with the RF source, such as reversing radar, alarm and other vehicle communication equipment. Can use ribbon or wide sponge strength double-faced adhesive stick to fix. Equipment with GSM antenna and GPS antenna, installation shall ensure that face up (skyward), and above no metal barrier shield, suggest installation position: Front windshield decorative below the covert, Front panel (skin for non-metal material) around the shadow Rear window below decorative</p>
5	Check if all the wiring has been connected correctly; then connect the GPS Tracker unit to the power supply.
6	We don't provide the SIM card

3.4 Description of AS4 Plus LED :

LED State Description

Red LED--- indicate charge state

State	Means
Always On	Battery Charging/work properly
Off	Battery Charging finished or device power off

Blue LED--- indicate the GPS signal state

State	Means
Flash fast	Searching signal
Always on	Working and has located
Off	Device sleep or device power off

Yellow LED--- indicate the GSM signal state

State	Means
Flash fast	GSM/GPRS initialization
Always on	GSM/GPRS Working normal
Off	Device sleep or device power off

4. SMS Command List

4. Important Notice:

1. This tracker have two work mode which is SMS and GPRS Mode. SMS mode is for off line tracking by Mobile phone. GPRS Mode is for on line tracking by computer and mobile phone .
2. Default password 0000
4. Main power off alarm: Device will send alert sms to the 3 controller phone number, and call the first controller number
Geo-fence alarm: Device will send alert sms and call the first controller number.
Over speed alarm: Device will send alert sms and call the 3 controller phone numbers.
Shock alarm: Device will send alert sms to the first controller phone number.
Low battery alert: Device will send alert sms to the first controller phone number.
ACC alarm: Device will send alert sms to the 3 controller phone number, and call the first controller number.

5. Detail Operation

1. Controller phone number

Command: controller phone number+ user password +space+Sequence number (1-3)

Eg: 158111122220000 1

Reply : SET USER NUMBER 1 OK.

Eg: 168111122220000 2

Reply : SET USER NUMBER 2 OK

Eg: 178111122220000 3

Reply : SET USER NUMBER 3 OK

Note: 1. Tracker can have three pre-saved number

2. New Number can cover the old number

3. No pre-saved number also can control the tracker, but alarm information only to pre-saved number

2. Work Mode Exchange :

SMS Mode Command: 700+ user password

Eg: 7000000

Reply: SET MODE OK, CURRENT MODE: SMS

GPRS Mode Command: 710+ user password

Eg: 7100000

Reply: SET MODE OK, CURRENT MODE: GPRS

3. Change user password

Command: 777+new password +old password (4 figures)

Eg: 77712340000

Reply: SET USER PASSWORD OK

4. Request the single position

Command: 666+ user password

eg: 6660000

Reply: when the tracker receive the command, then will send the position with longitude and latitude

5. Request location with Google map URL link

Command : 669+ user password

Eg: 6690000

Command: Reply : When the tracker receive the command, tracker will send a Google link to the sender

6. Command Get Daily report:

Command : 665+ user password+HHMM

Example: 66500001022

Reply: SET DAILY REPORT OK

Note: HH stands for hour with defined range of [00, 23]. MM stands for minute with defined range of [00, 59].

Close daily report function: 665+password+OFF (Default)

Example: 6650000OFF

Reply: SET DAILY REPORT OFF

7. Geo- Fence

Turn On Geo-fence

Command: 211+ password

Eg: 2110000

Reply: GEO-FENCE ON

Set Geo Fence Command: 005+user password+Space+R

E.g: 0050000 1000

Reply: GEOFENCE ON

R=Geo-fence radius, in the unit of meter, for accuracy reason, better more than 1000meter.

1000 means geo-fence radius is 1000meter

Turn geo-fence off

Command: 210+ password

Eg: 2100000

Reply: GEO-FENCE OFF

8. Battery low voltage alert

While device detect internal battery is low power, it will send coordinate message with
STATE:LOW P O W E R

9 .Alert while power off

Open the power off alert Command: 011 + user password

eg: 0110000

Reply: POWER ALARM ON

Close the power off alert Command: 010 + user password

eg: 0100000

Reply: POWER ALARM OFF

10. Power cut

Cut power: 940+password

Eg: 9400000

Enable power: 941+password

Eg:9410000

11. Mileage Statistics(Software Support)

Set initial mileage value (zero clearing)

Command: 142+PW<+M+X>

Eg : 1420000

Reply : MILEAGE STATISTICS RESET OK

Eg : 1420000M1000

Reply : SET TOTAL MILEAGE OK,CURRENT: 1000

Note: M is delimiter, X is initial mileage value with unit of meter

Read current mileage

Command: 143 + user password.

eg: 1430000

Reply : MILEAGE STATISTICS:ON, CURRENT TOTAL MILEAGE:XX.

12. Time Zone

Command: 896 + user password + D + NN

Eg: 8960000E08

Reply : TIME ZONE SET OK,CURRENT: E8.

Note : D takes E or W to indicate east or west time zone respectively. N takes a 2-digit number (1-12) to indicate time zone number.

13. Overspeed Alarm

Command : 122+user password+space+X

Eg: 1220000 120

Reply: SET RATE LIMIT:120

Close command : 1220000 0

Note : X is speed benchmark value, which is an integral number. unit is KM/H with defined domain of [0, 999].

14. Tow alarm

Turn on tow truck alert: 181 + user password + TX

Eg: 181000015 (15 seconds)

Reply : TOWED ALERT ON

Turn off tow truck alert: 180 + user password

Eg: 1800000

Reply : TOWED ALERT OFF

Note: X is the continuous time, the wide is 【15, 100】 , the unit is second

15. Set Defence Alarm ON/OFF

Set Up Defence: 712+password

Eg: 7120000

Reply: SF OK

Set Down Defence: 713+password

Eg: 7130000

Reply: CF OK

17. Sleep Mode:

Turn on sleep mode:

SLEEP+user password+space+X

X means sleep time, from 1-720, in the unit of minute. If device not receive any command or move at the X time you set, device will close GPS,GSM module, and be in power saving mode.

Eg: SLEEP0000 1

Turn off sleep mode:

SLEEP+user password+space+0

Eg: SLEEP0000 0

Reply: SET OK

18. Set Access Point Name (APN)

Command1: 803+user password+space+APN

eg: 8030000 CMNET

Command2 : 803+user password+space+APN+space+APN user name+space+APN Password

Reply: SET GPRS APN OK

19. Set server IP address and Port

Command: 804+user password+space+IP+space+Port

Eg: 8040000 91.98.102.14 8000

Reply: SET SERVER IP AND PORT OK

18. Set Data upload interval time

Command: 805+user password+Space+X

Eg: 8050000 20

Reply: SET OK

Device will upload location to platform every 20 seconds when car acc is on.

Command: 809+user password+Space+X

X is the location upload interval when car acc off, in the unit of seconds.

Eg: 8090000 60

Reply: SET OK

Device will upload location to platform every 20 seconds .Note : X is mean interval time, the unit is seconds, the wide is **【1, 1800】**

We suggest X be no more than 480 seconds to avoid gprs traffice jam.

Specail Command :

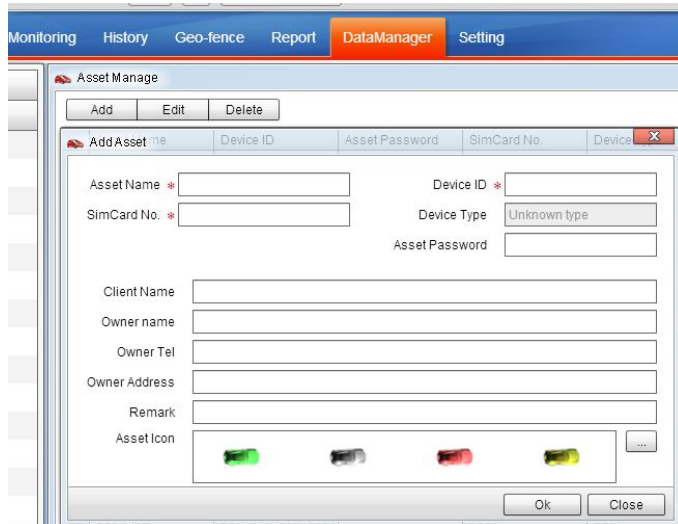
- 1、Reset Command : RESET
- 2、Restart Command RESTART
- 3、Read the current setup information Command: RCONF

5. Track by 900D web based tracking software Setup

Please follow above commands to set ip,port(IP is 91.98.102.14, port 8000), and APN, data upload interval.

Then please go to <http://www.gpspanel.ir>

Enter the user name and password we provided. After log in, please go to "Data Manage-Asset Manage", click "Add"



Asset Name: Define by yourself; you can enter A-Z number or Numeric

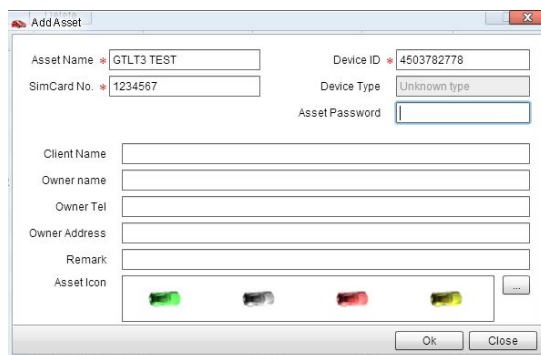
Very Important Note: Terminal ID and Plate number are unique on the software, you can add once only, you need to delete it from database before adding it again. Only admin account can delete id from database, general user cannot. You do not need to delete and re-add if the device cannot work on software, because it's caused by your wrong sms setting, not the software.

Terminal Type: Do not choose.

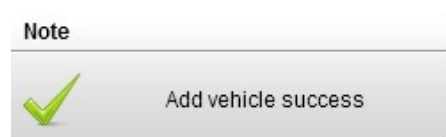
SIM card: the SIM card phone number you put in MT-1 or any number.

Device ID: On the vehicle of AS4 Plus, you can find the "Device ID".

Asset Password: define by yourself.



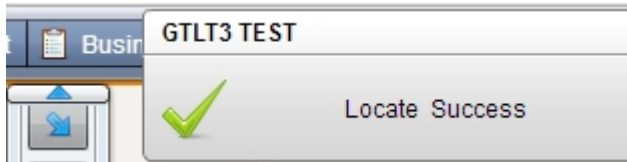
Click "Submit", and then you add the GPS tracker MT-1 successfully on the software 900D.



Wait few seconds, and you will see the GPS Tracker online icon on software



Put a check mark on the device, and right click, you will see the menu as below picture. Now you can track online.



Attention: For 900D GPS Software, "Monitor" and "Number Plate" must be checked till the font becomes blue, then the GPS tracker will update location automatically on map. Like below picture:



Contacts

If you encounter any problems when using our products, and cannot solve them by yourself, please contact our technical support team by writing an E-Mail to us. We will be pleased to help you.